

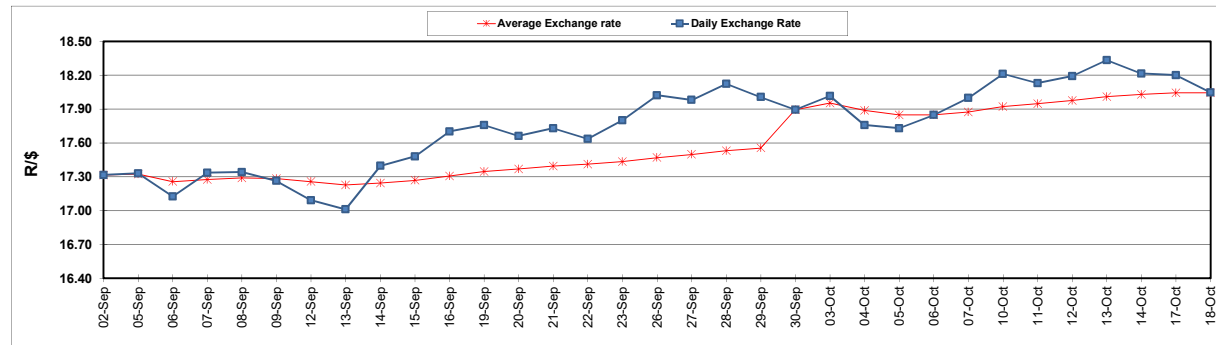
	PETROL 95 ULP	PETROL 93 ULP & LRP	DIESEL 0.05%	DIESEL 0.005%	ILL. PAR.
GAUTENG PUMP PRICE (SA c/l) AS FROM 05/10/2022	2,236.000	2,206.000	-	-	-
WHOLESALE PRICE (SA c/l) AS FROM 05/10/2022	-	-	2,406.100	2,430.500	1,699.288
SINGLE NATIONAL MAXIMUM RETAIL PRICE	-	-	-	-	2,240.000
BASIC FUEL PRICE - 18/10/2022 (SA c/l)	1,189.048	1,162.495	1,706.231	1,731.962	1,603.266
PRESS RELEASE CONTRIBUTION TO BFP 05/10/2022 - 18/10/2022 (SA c/l)	1,145.750	1,115.750	1,523.630	1,548.030	1,481.128
UNIT OVER/(UNDER) RECOVERY - 18/10/2022 (SA c/l)	(43.298)	(46.745)	(182.601)	(183.932)	(122.138)
AVERAGE BASIC FUEL PRICE 30/09/2022 - 18/10/2022	1,213.074	1,188.554	1,684.122	1,710.252	1,572.898
AVERAGE UNIT OVER/(UNDER) RECOVERY 30/09/2022 - 18/10/2022	(43.785)	(52.266)	(162.799)	(165.683)	(77.693)

### ANALYSIS MOVEMENT OF AVERAGE OVER/(UNDER) RECOVERY

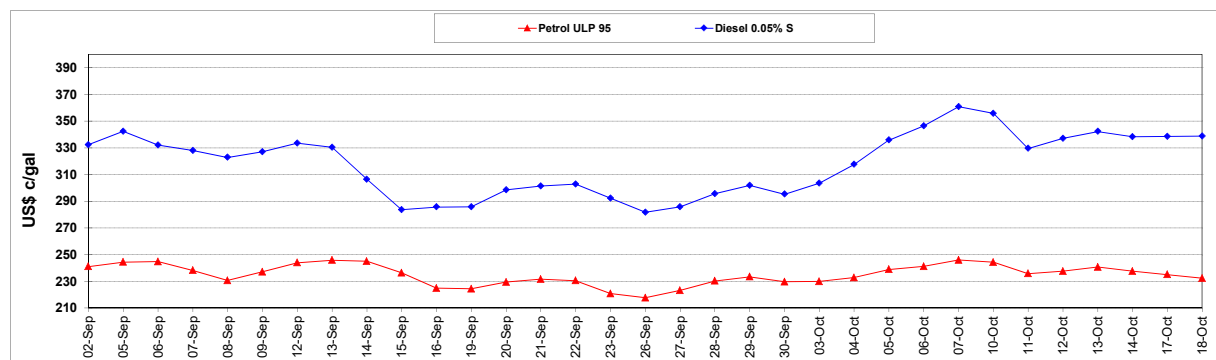
	PETROL 95	PETROL 93	DIESEL 0.05%	DIESEL 0.005%	ILL. PAR.
- MOVEMENT IN INTERNATIONAL PRODUCT PRICES	(41.238)	(49.769)	(159.263)	(162.092)	(74.389)
- MOVEMENT IN EXCHANGE RATE	(2.548)	(2.497)	(3.537)	(3.592)	(3.304)
AVERAGE UNIT OVER/(UNDER) RECOVERY 30/09/2022 - 18/10/2022	(43.785)	(52.266)	(162.799)	(165.683)	(77.693)

### R/\$ EXCHANGE RATE - (R/\$18.0463 - 18/10/2022)

#### EXCHANGE RATE USED IN BASIC FUEL PRICE



#### INTERNATIONAL PRODUCT PRICES OF BASKET USED IN BASIC FUEL PRICE



#### BASIC FUEL PRICE IN SA CENTS PER LITRE

